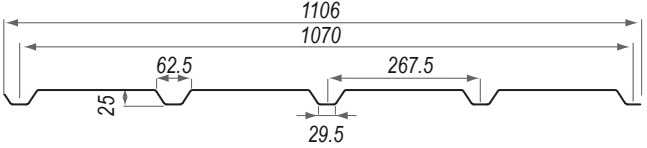


PERFOLUX profile 25/1070B - translucent perforated sheet CLADDING ASSEMBLY

Product	Total width (mm)	Useful width (mm)
Profile 25/1070B	1106	1070

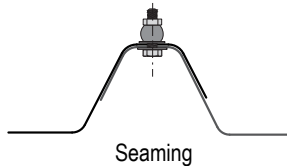
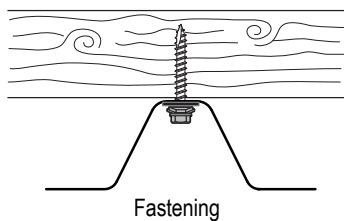


Specifications	
Range	ONDEX PERFOLUX
Dimensional features (mm)	Thickness: 0.9 Perforations diameter: 5 Space between perforations: 13
	Standard lengths: 1500 - 2000 - 2500 Other lengths on request (max. 4500)
Partial perforations	On request (multiples of 245 mm)
Material	High resistance bi-stretched PVC
Fire classification (EN 13501-1)	B s1 d0
Colours	Translucent - Opaque (on request)
Light transmission	64 % for translucent
Suitable temperature range	-40°C to + 65°C
UV protection	Both sides
Windbreak efficiency	90 % (Eiffel Institute)
Multiplying coefficient	8.6 (Report 14-138)
Overlaps between sheets	Transversal: 100 mm Longitudinal: 1 corrugation
Cutting and drilling of sheets	
Cutting tool	Standard (fine tooth saw)
Recommended pre-drilling	∅ 10 mm / conical or centre drill used at medium speed

Fastening	
Screw	Timber support Screw ZAMAC 6.5 x 50 mm + washer ∅ 25
	Metal support < 8 mm Screw ZAMAC 5.5 x 27 mm + washer ∅ 25
Sheets seaming	Plasteseams INOX ∅ 9.6 mm

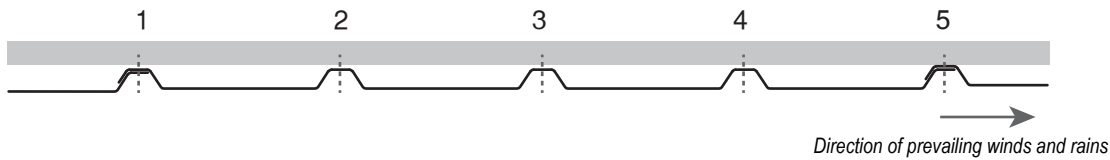
Seaming with an expansive plasteseam in neoprene rubber is recommended for a space between centre lines in purlin > 80 cm.

It should be positioned in the middle of the longitudinal overlapping.

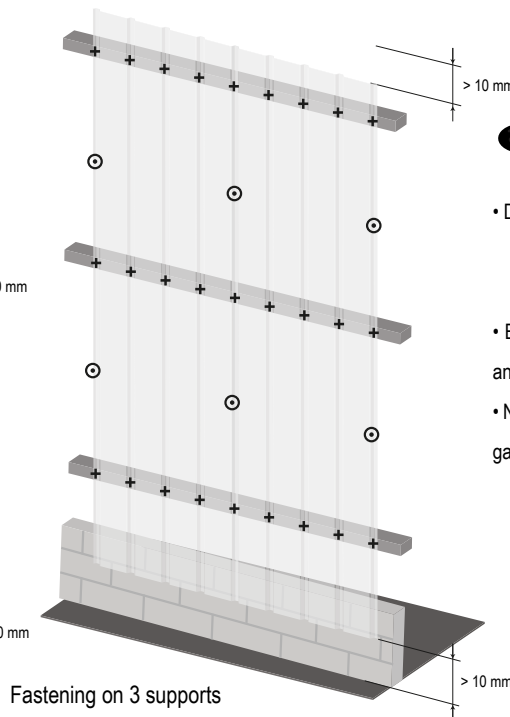
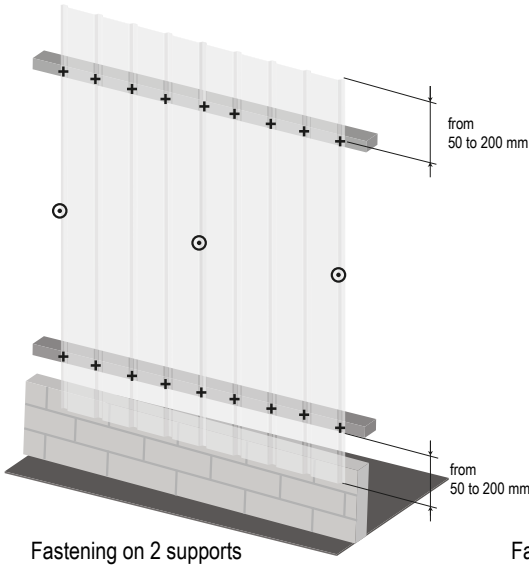


This method of installation optimizes ventilation by a lamellar airflow through the troughs. Besides it allows to evacuate moist flows outwards

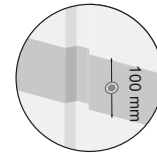
Fastening distribution



- + Fastening in corrugation trough
- ⊙ Seaming



- Do not place the sheets directly on the ground to:
 - allow surface water to run off
 - prevent the entry of rain water between the sheets
- Eaves at the ends of the sheets must be be between 50 mm and 200 mm.
- Never restrain the sheet ends. Allow for a 10 mm expansion gap at each sheet end.

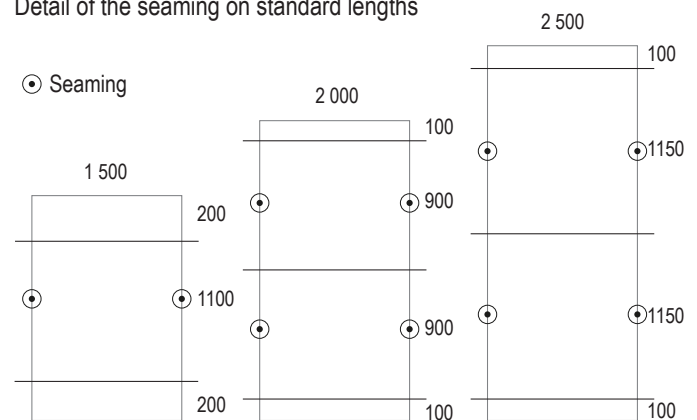


Overlapping

Recommended gap between purlins (m)

Upward loads (wind depression) daN/m ²	Max. gap between purlins (m) Deflection 1/50	
	2 supports	3 supports
50	1.37	1.50
60	1.27	1.44
80	1.20	1.35
100	1.12	1.26
120	1.06	1.20
140	0.99	1.12
160	0.94	1.05

Detail of the seaming on standard lengths



CAUTION

➔ FOR COUNTRIES OTHER THAN FRANCE, check the admissible loads according to the calculated spans and applicable regulatory standards in the country in which the building will be constructed.

➔ This synoptic data sheet is not intended to replace a more technical documentation or technical certification with installing instructions. For further information, please contact our technical support on +33 3 80 46 80 52

<p>PVC 100 % recyclable product</p>	<p>Protect the sheets from sunlight, wind and rain with an opaque white polyethylene tarpaulin during storage and throughout the installation.</p>	<p>Do not use with insulating materials</p>	<p>Claddings with a low end which is less than 1.5 m from the ground must be protected to avoid potential deterioration through severe impacts (machines or vehicles)</p>	<p>Do not step directly on the sheets</p>
---	--	---	---	---