

LIGHT RIDGES
Ventilated lighting ridge
for farm buildings



Ventilated lighting ridge for farm buildings

Thanks to their shape and optical qualities the **ONDEX** light ridges are a practical, efficient and fast solution to make a ventilated lighting ridge.

The **ONDEX** light ridges allow an easy installation. They are perfectly suited to new buildings and to the renovation of existing buildings.

The translucent **DIFFU100** light ridges in PVC provide both lighting and ventilation, in accordance with the technical standards in force.

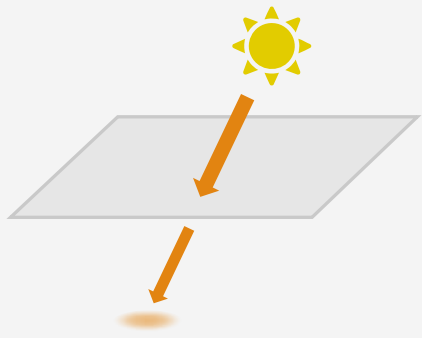
COLOUR DIFFU100

Light diffusion

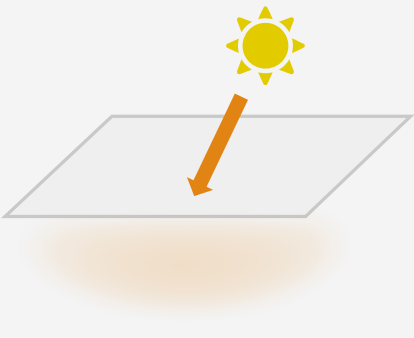
Thanks to its formulation, **DIFFU100** provides homogeneous and total **INDIRECT** light diffusion.

- No shadow cast on the ground
- No hot spot
- Thermal comfort (THI)

DIRECT LIGHT



INDIRECT LIGHT



WHY CHOOSE ONDEX?



RESISTANCE TO CHEMICAL AGENTS
(List on request)



HIGH IMPACT RESISTANCE



THERMAL INERTIA



EUROCLASS FIRE RATING B s1 d0



OPTIMAL LIGHT TRANSMISSION



APPROVED VENTILATION



HAIL RESISTANCE

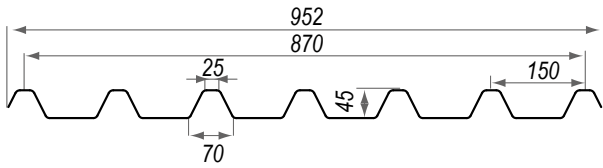


100% RECYCLABLE

TECHNICAL FEATURES

Opening angle Nw5 (140°) for a 20° (36%) roof pitch β

Profile 150/45



REQUIRED NUMBER OF LIGHT RIDGES:

Ridge length in m

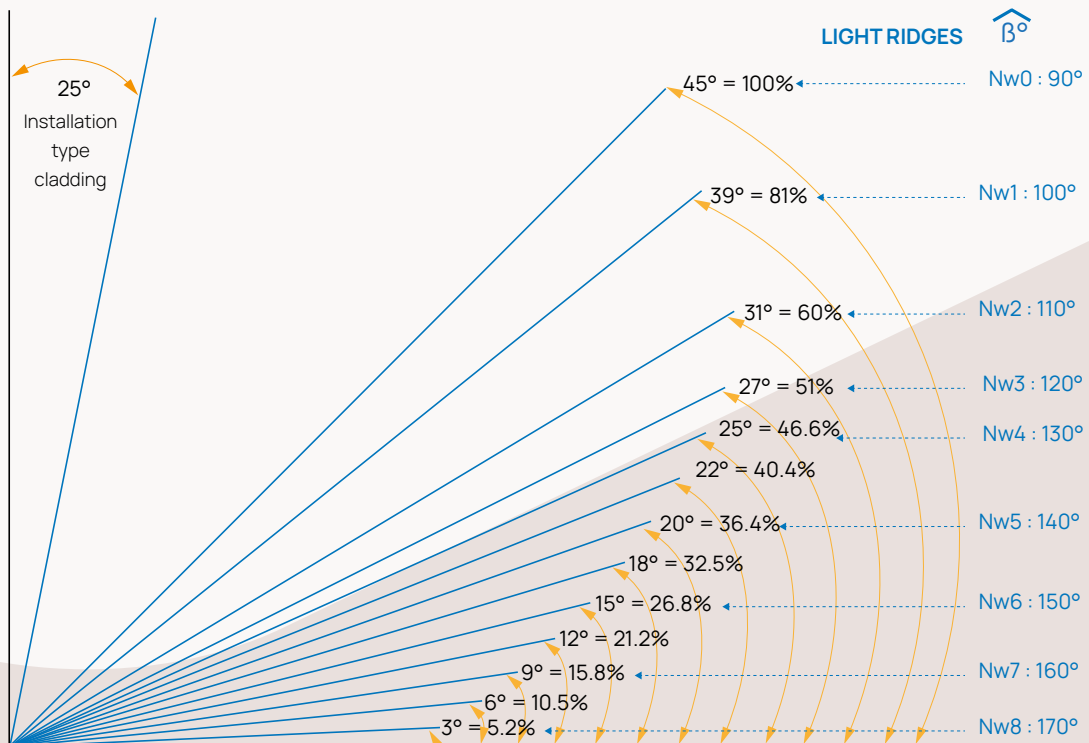
0.870 m

Standard light ridges

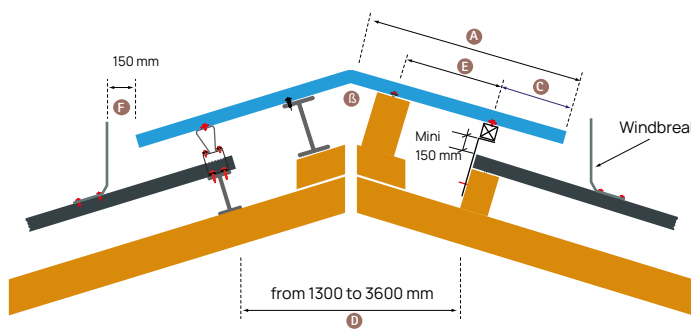
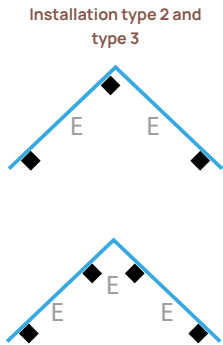
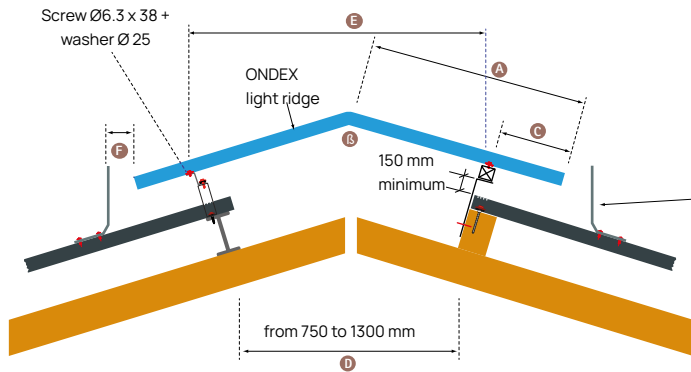
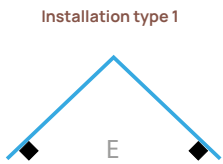
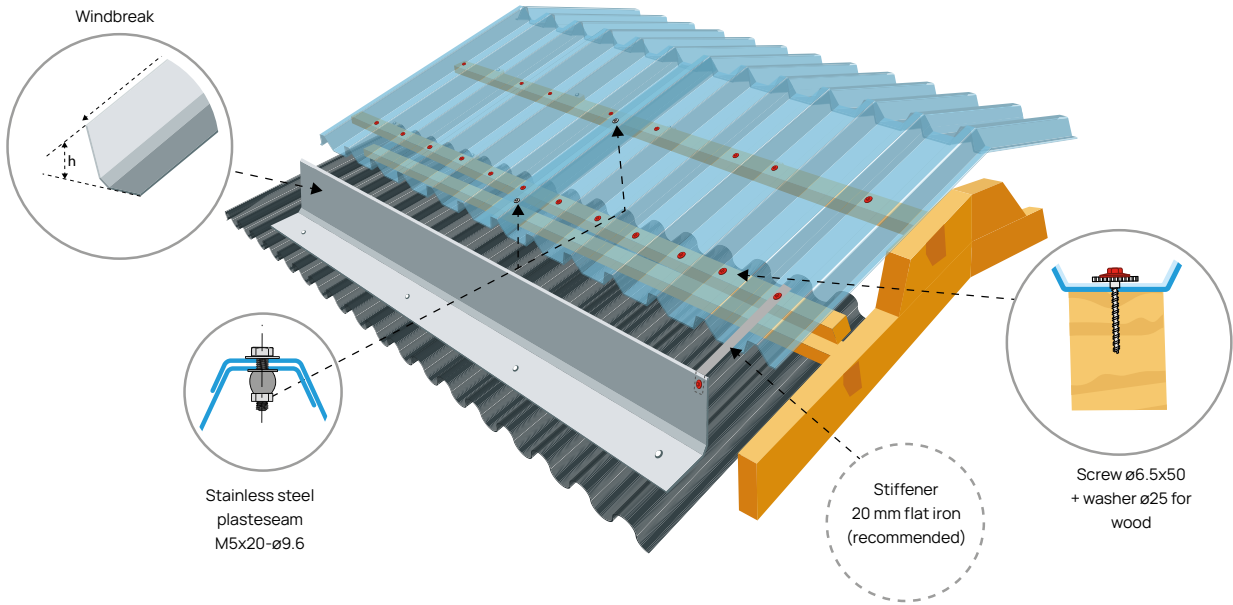
A Wing length in mm	C Lower ridge overhang	D Shaft width	E Max. gap between purlin	Installation type
400	50 to 100	564 to 658	660	
500		752 to 846	850	
600	100 to 200	752 to 940	950	
700		940 to 1128	1130	
800		1128 to 1316	1320	
900		1222 to 1410	650 to 750	
1000	150 to 250	1410 to 1597	750 to 850	
1100		1597 to 1785	850 to 950	
1200		1785 to 1973	950 to 1050	
1300		1973 to 2161	1050 to 1150	
1400		2161 to 2349	1150 to 1250	
1500		2349 to 2537	1250 to 1350	
1600		150 to 300	2443 to 2725	
1700	2631 to 2913		914 to 1012	
1800	2819 to 3101		979 to 1077	
1900	3007 to 3289		1044 to 1142	
2000	3195 to 3477		1110 to 1208	
2100	3383 to 3665		1175 to 1273	
2200	3571 to 3853		1240 to 1338	

Other angles or wing lengths possible on request.

Possible opening angles



INSTALLATION

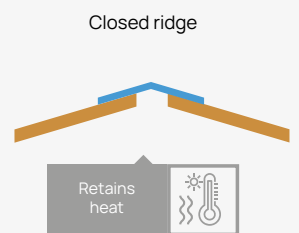
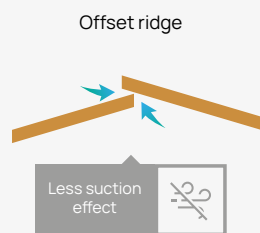
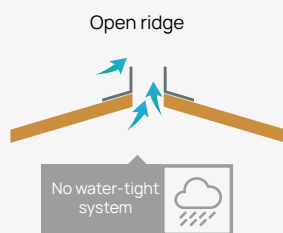
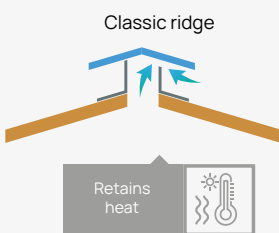


PVC windbreak Grey close to RAL7035	Height (h)	Thickness
WINDBREAK h225	225 mm	4 mm
WINDBREAK h350	350 mm	4 mm

Ventilation for 1 roof slope	Space F	Value
For 1 roof light 150x45	150 mm	1920 cm ² / ml

Value given for installation on a roof in GO 177/51

EXISTING SOLUTIONS





COMPOSITION

The **ONDEX LIGHT RIDGES** are made with translucent **DIFFU100** bi-stretched sheets profile 150/45.

So they benefit from all qualities resulting from the bi-stretching process:

- + Shock resistance
- + Mechanical resistance
- + Resistance to thermal shocks
- + Hail resistance

Besides they have an excellent resistance to aggressive chemical fumes (ammoniac, ...)

AN EXCELLENT LUMINOSITY

- + Contributing to the livestock growth and well-being
- + Preventing the formation of moss

A NATURAL VENTILATION FOR

- + A healthier environment
- + A limited condensation

A MAXIMUM DURABILITY FOR

- + A lasting light transmission
- + A limited dirtying thanks to a smooth and homogeneous material



WHAT IS THE BI-STRETCHING?

An exceptional resistance «Made in France»

Invented and patented in 1964, this process is unique in the world for the production of cladding and roofing sheets.

Bi-stretching involves stretching the sheet in both width and length before giving it its final shape.

This entirely mechanical process is perfectly stable over time and gives the **ONDEX** sheets their incomparable resistance.

More than three times higher than non bi-stretched PVC sheets! !

WHAT IS PVC? POLYVINYL CHLORIDE

It has been produced industrially since the 1960s and is now the most widely used plastic material in the world in the construction industry.

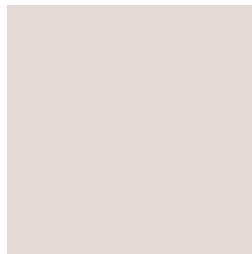
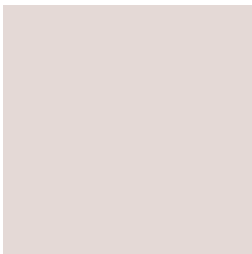
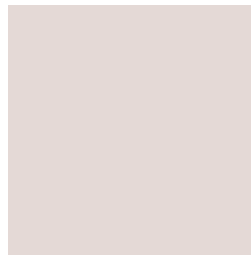
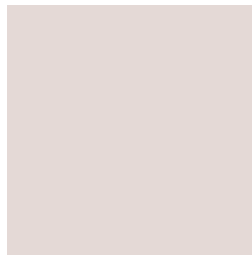
It is a thermoplastic resin that easily accepts the shape you want to give it.



PVC IS MADE FROM SALT (57%).



PHTALATE AND BISPHENOL A FREE



ONDEX
Avenue de Tavaux
21800 Chevigny-Saint-Sauveur
FRANCE
Tel +33 (0)3 8046 8006
commercial@ondex.com
www.ondex.com



The information contained in this document is given in good faith for information purposes only. It reflects the state of our knowledge at the time of writing. It cannot be considered as a suggestion to use our products in opposition to existing patents, legal or regulatory, national or local requirements. The buyer alone is responsible for informing and advising the end user. We shall not be liable for any failure by the buyer to comply with these regulations, rules and duties.

GB 26 007
05/2026
xPDF